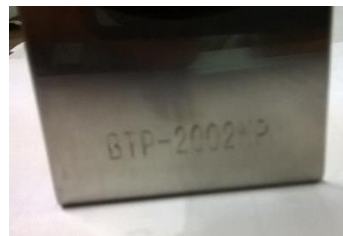


OLO Herald Print Alert Messenger Guide

- 1 - Mounting Options
- 2 - Setting up Herald Print Alert Messenger
- 3 – Configuring the Herald Print Alert Messenger

1. Mounting Options - Includes BTP-2002NP and BTP-R180ii

Mounting onto BTP-2002NP



- Attach the OLO mounting ring with the 3 shorter panhead screws provided. Install the screws through the bracket first as shown so they do not interfere with the OLO adjustments.
- Ensure the spacers are against the bracket.



- Use the larger bracket labeled BTP 2002NP.
- Align 2 screw holes over 2 available holes near the printer edge.
- Install the replacement feet with the provided screws.



- **Note:** Install the 4 replacement feet with the washer against the printer housing or bracket. Insert screw from opposite side of feet as shown.



Mounting onto BTP-R180ii



- Attach the OLO mounting ring with the 3 shorter panhead screws provided. Install the screws through the bracket first as shown so they do not interfere with the OLO adjustments.



- Ensure the spacers are against the bracket.



- Attach bracket to printer housing with 2 countersink screws provided.



2. Setting up Herald Print Alert Messenger



Light and Sound – Setting Mode

Enter Setting Mode to adjust light flash and audible tone alerts.

- Power OFF the printer.
- Press and hold Mode switch on the Herald. The Herald should beep.
- Power On the printer. The Herald should now be in Setup Mode.
- Leave the Herald in Setup Mode during the rest of this instruction set.

Modes

Mode Switch Press	Mode Indicator	Mode
1	1 Flash	Volume
2	2 Flashes	Light Flash Control with Tone Alert
3	3 Flashes	Tone Alert Control

Press **OK** to accept setting.

1. Set Volume



Press **OK** to scroll through the Volume options. Press **OK** again to accept setting.

Press OK	Volume
1	Low
2	Medium
3	Med - HIGH
4	High

2. Set Light Flash and Tone Control



Press **OK** to adjust the Light Flash. Press **OK** again to accept setting.

Press OK	Light flash
1	Flash with tone
2	Flash without tone
3	Light solid ON

3. Adjust Tone.

Press **OK** to adjust the Light Flash. Press **OK** again to accept setting.

Press OK	Tone
1	2 beeps
2	1 beeps
3	Running tone

4. Save settings - Power printer OFF, then ON to save settings.
5. Repeat process to change your settings.

3. Configuring the Herald Print alert Messenger

If you want the SNBC Printer to control it, you program it through the Feed Button Programming on the Printer.

Power Down the Printer – Hold Feed Button – Power On – Press and Hold Feed Button To Configure Printer – (Follow Prompts On Printout Pressing Feed Button X Times And Then Holding An Additional As ENTER)

BTP-R180ii
Configuration – 3 + Hold
Beep Settings – 9 + Hold
Enable External Harold – 2 + Hold
Exit With Save – 2 + Hold

BTP-2002NP
Configuration – 3 + Hold
Beep Settings – 4 + Hold
Enable – 2 + Hold
Last Menu – 2 + Hold
Exit With Save – 2 + Hold

Power cycle printer to exit setup and test modes.

Focus Setup

Ensure OLO is in the Device list.

- Enter the Setup screen. Click **Printer→ Remotes**.
- Select **OLO** in Remotes list. Note the com port setting.
- **Close** to exit

Setup the Device.

- **Locations→Stations→Devices**
- Set Device to **Drawer**
- Set Port to com port found in Remotes previously.
- Enter Access #. Necessary to trigger OLO alert unit with Drawer port on printer.
- **Save** then **Close** to exit.